

CAREER QUIZ

Discover Your Interests. Find out what your interests are. Answer the following questions spontaneously without overthinking. Assuming that you can do it all, choose ONE (1) answer for each question.

- Your country is holding the next Olympics and intends to create the next iconic stadium. Which of the following teams would you like to lead?
 - The Builders – Tasked to carry out the building process for entire stadium
 - The Materials Experts – Tasked to discover new alternative to steel for the stadium
 - The Designer – Tasked to design a virtual image of the stadium
 - The People Reactions - Tasked to ensure all 1,000 staffs in this project are well taken care and functioning at an optimal level
 - The Entrepreneurs – Tasked to negotiate with new investors and get good prices for materials
 - The Quantity Surveyors – Tasked to ensure that the building processes are on schedule and meet safety protocols
- One day, you receive a phone call. "Hello. I am Mike from Taylor Swift's management company. She would like to spend a day with you doing something amazing of your choice." Which of the following would you like to do with this mega superstar?
 - Drive your favourite sports car in a race circuits
 - Go on a discovery adventure to an underwater ancient city
 - Co-write and sing a new song
 - Bring her to a local hospital to cheer up terminally ill fans
 - Persuade Taylor to sign a shirt of yours so that you can sell it for a good price
 - Be one of Taylor's concert planners for her 1989 world tour
- It is a zombie apocalypse. You are protected within the safe zone but you have to work to contribute to the survival of a community. Which of the following would you like to be?
 - An engineer who ensures all damages done on the wall that protects the community from the zombies is thoroughly fixed
 - A researcher looking to discover the cure for the zombie virus
 - An artist tasked to create entertainment for the community to enjoy
 - A caretaker who ensures that the injured are cared for and children who lost their parents have homes to stay in
 - A politician who decides on which is more important – destroying all zombies or fortifying the community's defenses?
 - A coordinator tasked to ensure that food and water are distributed according to protocols
- Joker has sent the city into chaos by releasing a toxic laughing gas. You get a call from Batman saying "I need you to _____ NOW!" Which of the following requests from Batman would you gladly do for him?
 - "Suit up as Robin / Batgirl, hop into the Batplane and get me out of this collapsing building"
 - "Analyse the chemical compound of Joker's laughing gas"
 - "Design me the new Chemical-proof Bat suit"
 - "Suit up as Robin / Batgirl, get out to the city and help all civilians to safety"
 - "Head to Wayne Enterprise Board of Directors' meeting and ensure order within the corporation"
 - "Head to the Bat Cave to be my eyes and ears to help me coordinate our plan on fighting Joker"
- Walt Disney has decided to open an Avengers Theme Park in your country. Which of the following projects would you rather be involved in?
 - Assemble the giant Ironman figurine from head to toe
 - Research the history of Captain America for an accurate portrayal of the character
 - Illustrate concept art of each Avenger for decoration around the park
 - Cosplay as Black Widow / Thor to cheer up all the guests
 - Decide on whether there should be a gigantic figurine of Hulk and Ironman clashing
 - Plan the budget and regulation for the Hawk Eye rollercoaster

CAREER QUIZ

- A huge tsunami has struck your city/town, which of the following tasks would you like to help with?
 - Use appropriate tools to help clear the road of debris for rescue and repair work to move smoothly
 - Investigate the cause of the tsunami to create a prevention plan
 - Photograph and write about the situation to keep the public updated of the situation
 - Join the search and rescue team to help those who are stranded
 - Establish a Foundation to persuade companies and countries to donate for the crisis
 - Coordinate the flow of the relief centre and ensure spaces are optimised for everyone
- Facebook is running a campaign to discover what makes people happy. They want you on their team. Which of the following would you rather do?
 - Conduct repairs on computer equipment supporting the project
 - Research existing ideas of the happiness and inform the team on what to look out for
 - Write articles and design content for the project website
 - Conduct online interviews with those whom are identified as happy people
 - Persuade governments and Facebook partners to invest in this project
 - Track the behaviors of happy people and record them down
- A brutal murder has happened in your city/town. The killer left a note teasing that there will be another murder soon. You are part of the police force. Which role would you like to take for this case?
 - The task force responsible for chasing the murderer on the streets
 - The detective responsible for discovering the identity of the killer
 - The illustrator responsible for drawing the face of the killer based on witnesses' description
 - The special unit responsible for protecting key witnesses
 - The chief officer responsible for communicating with the government and media about the case
 - The officer responsible for documenting and filing reports that comes in regarding the case
- A local retirement home approaches you asking for help. Which of the following tasks would you rather do?
 - Fix and repair broken items
 - Share your research on healthy diets for elderly
 - Play music and sing to entertain the residents
 - Talk to the residents and help them cope with their problems
 - Discuss business with the retired business folks
 - Plan a retreat/small event for the residents to experience new things
- Your teacher asks you "which of the following tasks excites you the most?" Your answer is:
 - Working with Audi to build the next super car
 - Working with World Health Organisation to discover what can improve business
 - Working with Walt Disney Studios to direct the next Star Wars movie
 - Working with UNICEF to offer help to people who are in danger
 - Working with Virgin Group to create the next business plan
 - Working with HSBC to improve money transaction security

Now that you are done:
 1. It's time to tally up your score. Count the number of A's to F's you have
 2. Look at your top 3 scores. They suggest your interest areas
 3. Explore these interest areas in the result page

A	B	C	D	E	F

This quiz is created by counsellors of the Career Services Centre, Taylor's University. Disclaimer: Be advised that for best career match, one should also consider interest and ability. The above quiz is an INTEREST test and does not measure ability. Please consider your abilities when choosing a career. To learn more, please visit Taylor's University Career Services Centre for a personal career counselling session.



This publication contains information, which is current as of January 2019. Changes in circumstances after this date may impact upon the accuracy or timeliness of the information. Taylor's College does its best to ensure that the information contained herein is accurate, but reserves the right to change any information described in this prospectus without notice. Readers are responsible for verifying information that pertains to them by contacting the college.

Performance Rating by Ministry of Higher Education

Malaysia Rating for University and University College Excellence

Putra Brand Gold Awards

BRAND AWARDS 2010-2018

QS Stars Rated for Excellence & University Ranking by Region

Private University in Malaysia for Academic Reputation
 1st in the World for Graduate Employment Rate
 4th in the World for Graduate Employment Rate

QS WORLD UNIVERSITY RANKINGS

No. 1, Jalan Taylor's, 47500 Subang Jaya, Selangor Darul Ehsan
 Tel: 603-5629 5000 Fax: 603-5629 5001
 Email: applications@taylors.edu.my
 Website: www.university.taylors.edu.my

Taylor's Education Counselling Centres

- Penang Office Tel: 604-899 9396 Fax: 604-899 9596
- Johor Bahru Office Tel: 607-351 3692 / 3694 Fax: 607-351 3689
- Kuching Office Tel: 6082-345 807 / 808 Fax: 6082-345 809
- Kota Kinabalu Office Tel: 6088-486 936 / 937 Fax: 6088-486 938



TAYLOR'S EDUCATION GUIDE

CAREER QUIZ RESULTS

MOSTLY As THE "DO-ERS"

Traditional but hands-on, you like to take on mechanical or physical tasks that require you to think with your hands. When it comes to solving problems, you'll always find a practical and realistic solution to your problems.

Fields to Consider	Relevant Programme
Architecture, Project Management, Interior Design	Architecture & Quantity Surveying
Information Technology, Programming, Software Engineering, Game Designing	Computer Science & Information Technology
Marketing, Advertising, Event Management, Broadcasting	Media & Communication
Civil Engineering, Industrial Engineering, Computer Engineering, Electrical Engineering	Engineering
Culinary Arts, Hotel Management	Hospitality, Tourism & Culinary Arts
Medicine, Optometry, Dentistry, Paediatrics, General Practice, Surgery	Medicine

MOSTLY Cs THE "CREATORS"

Creative, imaginative and intuitive. You prefer to break free from the norm and use your creativity to express yourself rather than do structured tasks. Instead of going by the books, you prefer to think of new creative solutions to solve problems.

Fields to Consider	Relevant Programme
Architecture, Project Management, Interior Design	Architecture & Quantity Surveying
Marketing, Human Resource Management, Consultancy, Advisory	Business
Web Designing, Game Designing, Programming, Mobile App Developing	Computer Science & Information Technology
Creative Arts (Dancing, Acting, Music), Advertising, Broadcasting	Media & Communication
Graphic Design, Web Design, Movie Production, Interior Design	Design
Philosophy And Anthropology, Lecturing, Counselling	Education
Hospitality, Tourism & Culinary Arts, Event Management	Hospitality, Tourism & Culinary Arts

MOSTLY Es THE "PERSUADERS"

Confident, enthusiastic, persuasive, optimistic and ambitious are some of the traits you possess, that will make you a leader in every aspect. You are always abreast with business and political developments and always think about starting up your own business.

Fields to Consider	Relevant Programme
Finance, Brand Management, Software Engineering, International Business, Human Resource Management	Business
Marketing, Advertising, Event Management, Broadcasting	Media & Communication
Consulting, Insurance Law, Business Law, Research	Law

MOSTLY Bs THE "THINKERS"

You're a natural mystery solver. Before taking any actions, you first gather information and then analyse the situation. Then you think of a solution or even a new method of working in order to solve that problem. You work well with figures and parts that require you to put two and two together.

Fields to Consider	Relevant Programme
Biology, Biochemistry, Biotechnology, Chemistry, Health Sciences	Biosciences
Computer Science, Programming, IT Consulting, Hardware Design, Engineering Information Technology	Computer Science & Information Technology
Marketing, Advertising, Event Management, Broadcasting	Media & Communication
Philosophy And Anthropology, Lecturing, Counselling, Educational Publishing	Education
Mathematics, Civil Engineering, Marine & Ocean Engineering, Aerospace Engineering	Engineering
Hospitality, Tourism & Culinary Arts, Event Management	Hospitality, Tourism & Culinary Arts
Medicine, Optometry, Dentistry, Paediatrics, General Practice, Surgery	Medicine

MOSTLY Ds THE "HELPERS"

Other people come before you. Your kindness, patience, generosity and empathy make you well liked by many. When it comes to group work, you are a very strong team player and always try to make everything a happy and comfortable experience for others.

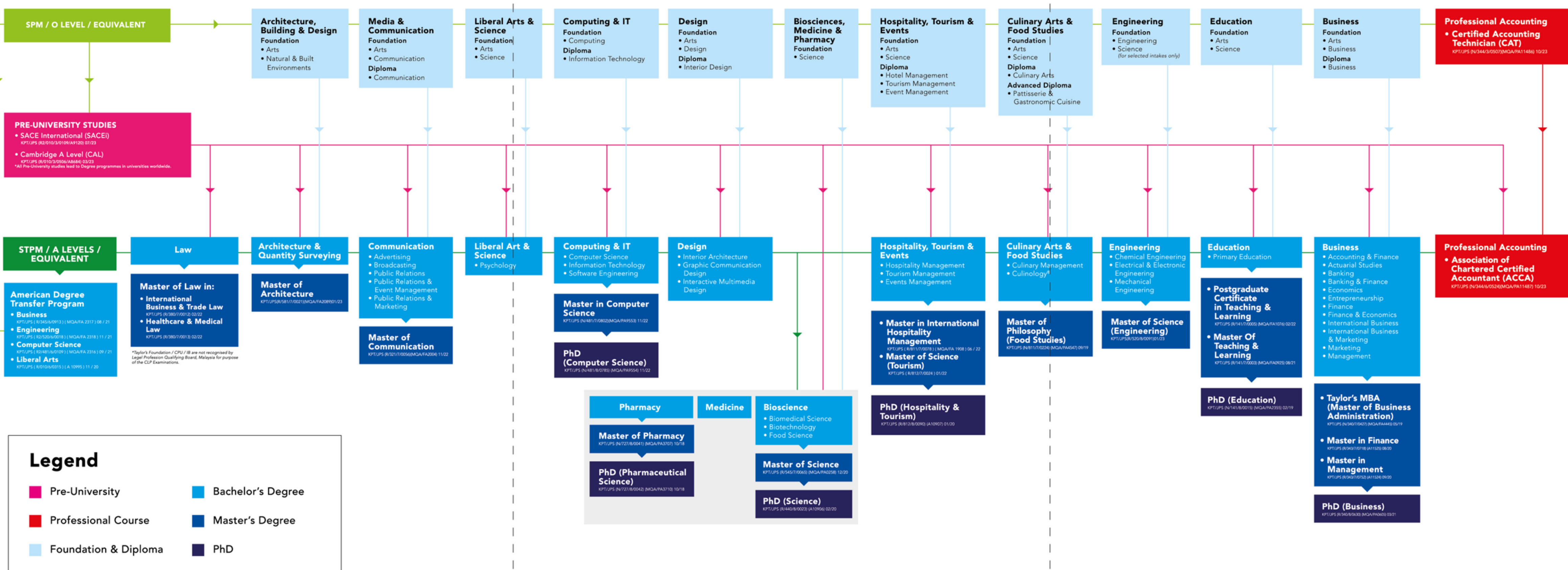
Fields to Consider	Relevant Programme
Human Resource Management, Consultancy, Advisory	Business
Political Science, Journalism, Public Relations, Advertising	Media & Communication
Psychology, Sociology, Education, Lecturing, Counselling	Education
Hospitality, Tourism & Culinary Arts, Event Management, Public Relations	Hospitality, Tourism & Culinary Arts

MOSTLY Fs THE "ORGANISER"

You are neat and organised, efficient and careful but a little reserved. You work well within a system and prefer to follow procedures and organise tasks. When in a team, you prefer to sit back and handle all the details.

Fields to Consider	Relevant Programme
Architecture, Quantity Surveying	Architecture & Quantity Surveying
Accountancy, Finance, Actuarial Science, Business Administration, Tax consulting, Banking, Auditing	Business
Programming, Business Analysis, Software Engineering, Computer System Engineering	Computer Science & Information Technology
Technical Writing, Civil Engineering, Biological Engineering, Computer Engineering	Engineering
Consulting, Insurance Law, Business Law, Research	Law

SEE THE BIG PICTURE



WHAT'S NEXT AFTER HIGH SCHOOL?

FOUNDATION

Choose Foundation in Arts / Science if:

- You want to keep your options open
- You are unsure of your preferred field of study
- You are looking for overseas transfer options

Choose specific Foundation Programmes if:

- You have a clear study interest
- You are looking for overseas transfer options (depending on the selection of degree programme)

List of Foundation Programmes:

- Arts
- Science
- Business
- Computing
- Communication
- Design
- Engineering
- Natural & Built Environments

DIPLOMA

Choose Diploma Programmes if:

- You have a clear study interest
- You wish to join the workforce upon graduation
- You want internship opportunities

List of Diploma Programmes:

- Business
- Communication
- Information Technology
- Interior Design
- Culinary Arts
- Hotel Management
- Tourism Management
- Event Management

PRE-UNIVERSITY PROGRAMME

Choose our Pre-U programmes if:

- You want to be prepared for tertiary education overseas
- You have the world's top universities in your sight
- You are unsure of your preferred field of study or future career

PRE-UNIVERSITY PROGRAMMES

Taylor's College Pre-U programmes are internationally-accepted and widely-recognised to help students to get the best head start in their tertiary education. With over 1,000 students placed in the world's Top 200 Universities every year, you can pick a programme that suits your own personal learning style.

Choose our Cambridge A Level (CAL) if:

- You prefer 100% exam-based assessment
- You have an analytical mind with a penchant for research skills
- You are aiming to pursue competitive degrees (Medicine, Pharmacy, Dentistry, etc.)

Choose our SACE International (SACEi) if:

- You can score better with assignments
- You are prepared for continuous coursework-based and exam-based assessments (70% coursework, 30% final exams)
- You are an independent and motivated individual who can manage self-directed learning